

Systems Leadership

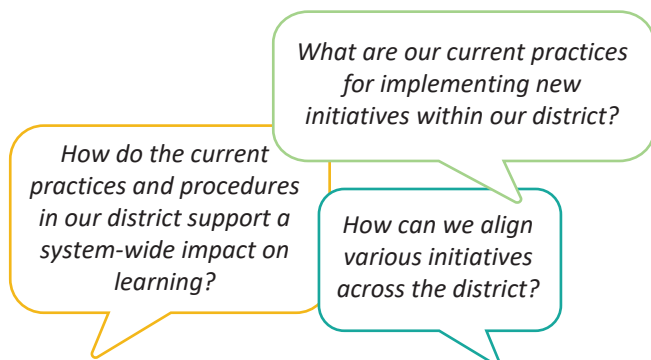
LEADERSHIP FOR EFFECTIVE IMPLEMENTATION OF DISTRICT-WIDE EVIDENCE-BASED PRACTICES



Overview

Effective educational leaders are systems thinkers who implement a cycle of continuous improvement and support the implementation of effective practices.

Thought Processes

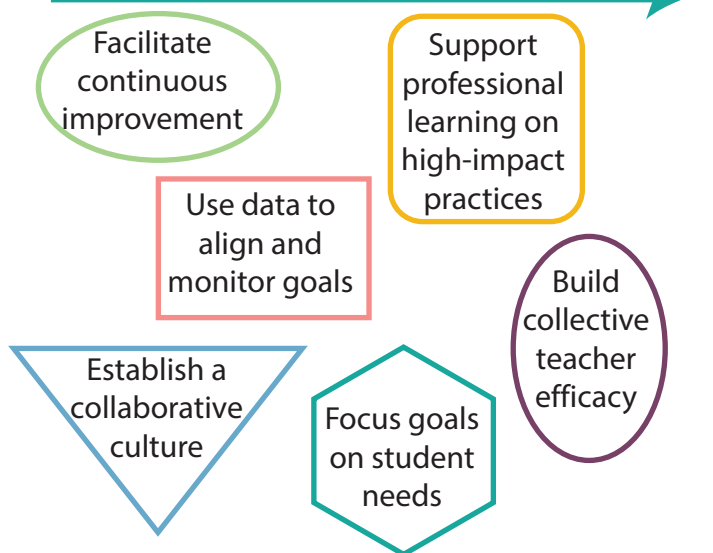


Importance

Educational leaders directly impact teachers and their ability to provide effective instruction. Systems leadership is essential to helping districts adapt to changing needs and become more innovative and effective.



Leaders



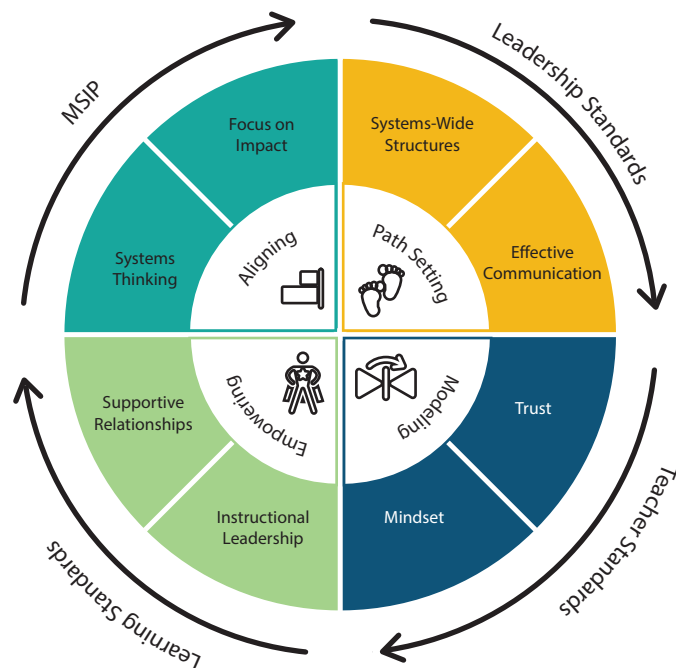
Leadership Framework

Aligning - performance goals and district-wide initiatives

Path Setting - structures and processes to support collaboration and communication

Modeling - leading within a context of a growth-centered, trust-based culture

Empowering - supporting and monitoring active use of effective practices



As a Result, Educators

