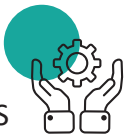


# Systems Leadership

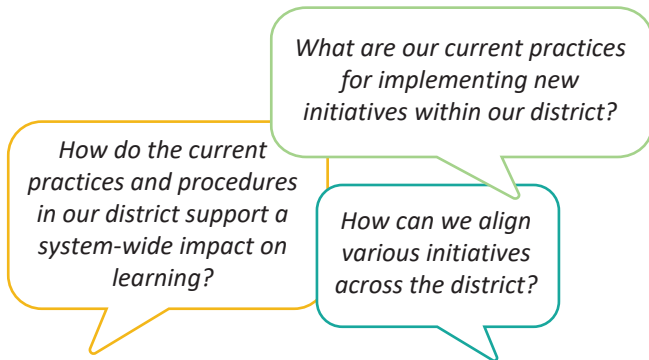
LEADERSHIP FOR EFFECTIVE IMPLEMENTATION OF DISTRICT-WIDE EVIDENCE-BASED PRACTICES



## Overview

Effective educational leaders are systems thinkers who implement a cycle of continuous improvement and support the implementation of effective practices.

## Thought Processes

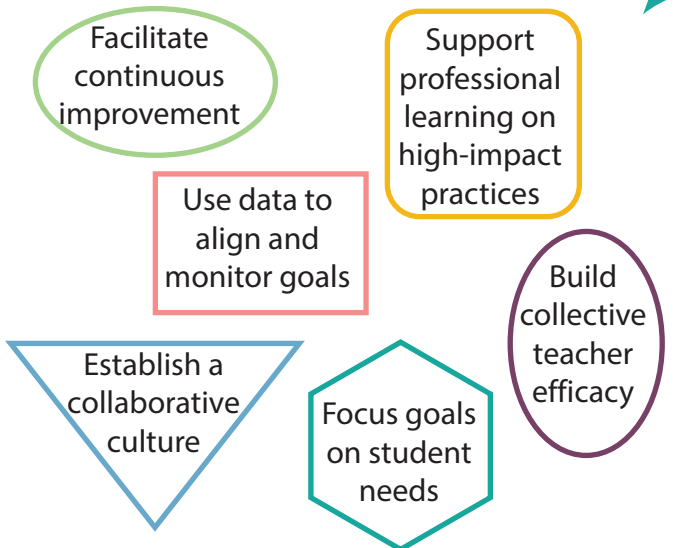


## Importance

Educational leaders directly impact teachers and their ability to provide effective instruction. Systems leadership is essential to helping districts adapt to changing needs and become more innovative and effective.

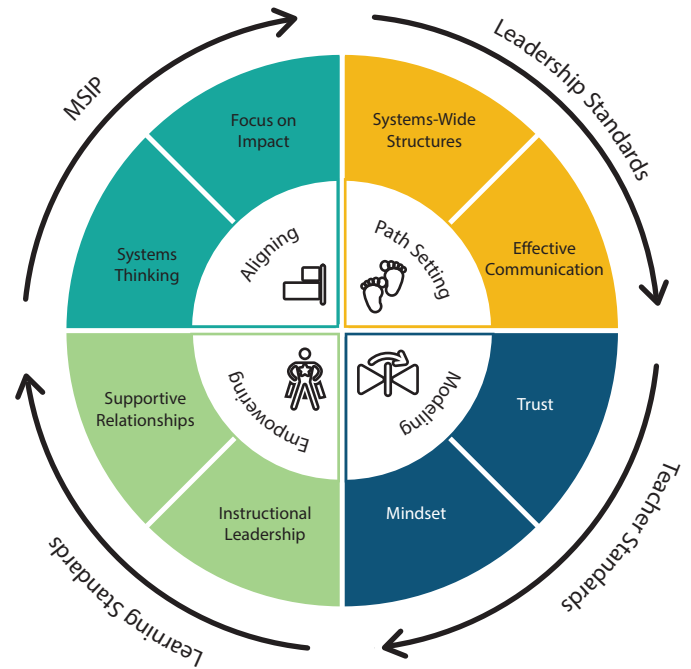
- Student achievement
- Teacher well-being
- Effective school systems
- Effective instructional practices

## Leaders



## Leadership Framework

- Aligning** - performance goals and district-wide initiatives
- Path Setting** - structures and processes to support collaboration and communication
- Modeling** - leading within a context of a growth-centered, trust-based culture
- Empowering** - supporting and monitoring active use of effective practices



## As a Result, Educators

